



GAS CONDENSING BOILERS

ECOCONDENS GOLD PLUS

SYSTEM BOILERS:

ECOCONDENS GOLD PLUS 20 power: 3,4 - 21,0 kW (50/30°C)

ECOCONDENS GOLD PLUS 25 power: 3,0 - 27,0 kW (50/30°C)

ECOCONDENS GOLD PLUS 35 power: 3,4 - 34,6 kW (50/30°C)

COMBI BOILERS:

C.H.

ECOCONDENS GOLD PLUS 20 power: 3,4 - 21,0 kW (50/30°C)

ECOCONDENS GOLD PLUS 25 power: 3,0 - 27,0 kW (50/30°C)

ECOCONDENS GOLD PLUS 35 power: 4,5 - 34,6 kW (50/30°C)

D.H.W.

power: 3,4 - 24,0 kW (80/60°C)

power: 2,8 - 26,6 kW (80/60°C)

power: 4,1 - 35,3 kW (80/60°C)

TECHNICAL FEATURES

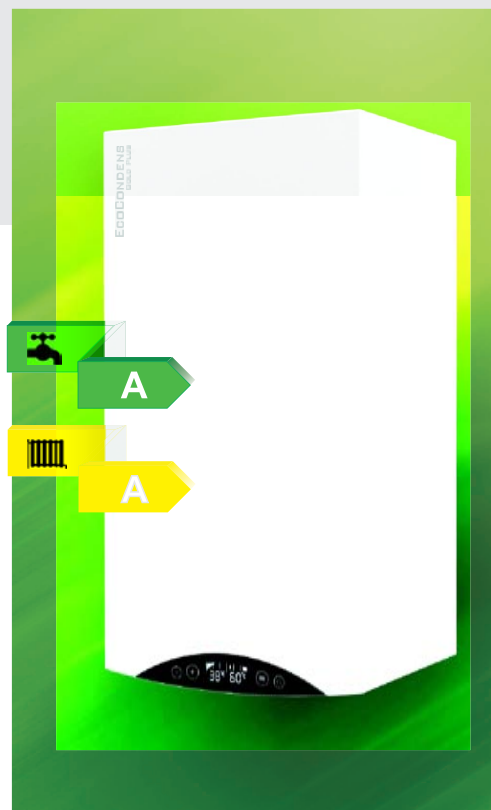
- modulating pump (PWM signal) with automatic air vent
- heat exchanger made of stainless steel
- modulating fan
- BLUEJET® burner:
 - wide range of modulation: 11%-100%
 - improved flame detection
 - reduced pollutant emissions
- NOx emission class - 6
- modern control panel with systems:
 - LIN (Local Interconnect Network) with mobile applications for service (**Service System**) and for end-user (**Comfort System**)
 - weather regulation
 - Open Therm
 - 0-10 V



MOBILE APP
COMFORT
SYSTEM



MOBILE APP
SERVICE
SYSTEM



ACCESSORIES



WIRELESS/WIRE, WEEKLY PROGRAMMABLE room temperature regulator
termet ST-292 V2 - wireless
termet ST-292 V3 - wire



OPEN THERM ROOM TEMPERATURE REGULATOR type:
termet ST-2801
termet ST-2801 wi-fi



REGULATOR COMFORT WI-FI dedicated to the Comfort application



WI-FI SMART THERMOSTAT

D.H.W. SYSTEM

SYSTEM BOILERS

- work with domestic hot water tank by three-way valve (pre-installed in the boiler)

COMBI BOILERS

High comfort for d.h.w. at Δt 30°C:

- 11,5 l/min (ECOCONDENS GOLD PLUS 20)

- 13,0 l/min (ECOCONDENS GOLD PLUS 25)

- 17,0 l/min (ECOCONDENS GOLD PLUS 35)

TECHNICAL DATA

PARAMETERS		SYSTEM BOILERS			COMBI BOILERS		
		20 kW	24 kW	32 kW	20/24 kW	24/27 kW	32/35 kW
Seasonal space heating energy efficiency class		A	A	A	A	A	A
Rated heat output	P_{rated} kW	19	24	32	19/24	24/27	32/35
Annual energy consumption	Q_{HE} GJ	38	48	67	38	48	67
Seasonal space heating energy efficiency	η_s %	94	94	94	94	94	94
Modulation range	%	14-100	11-100	12-100	14-100	11-100	12-100
Maximum central heating water pressure	bar	3	3	3	3	3	3
Declared load profile		-	-	-	L	L	XL
Water heating energy efficiency class		-	-	-	A	A	A
Water heating energy efficiency	η_{WH} %	-	-	-	82	81	83
Water flow at Δt 30°C	l/min	-	-	-	11,5	13,0	17,0
Water pressure in d.h.w. circuit	bar	-	-	-	0,1-6,0	0,1-6,0	0,1-6,0
Sound power level	L_{WA} dB	46	48	48	46	48	48
Annual fuel consumption	AFC GJ	-	-	-	12	12	18,5
Chimney connection	mm	Concentric $\varnothing 80/\varnothing 125$, $\varnothing 60/\varnothing 100$ or 2 single $\varnothing 80$					
Dimensions (height x width x depth)	mm	750x400x349	750x400x349	750x400x379	750x400x349	750x400x349	750x400x379
Net weight	kg	33	33	34	34	35	36



GAS CONDENSING BOILERS WITH INTEGRATED HOT WATER TANK

ECOCONDENS INTEGRA II PLUS

COMBI BOILERS

C.H.

D.H.W.

ECOCONDENS INTEGRA II PLUS 20 power: 3,0 - 22,0 kW (50/30°C) 2,7 - 25,0 kW (80/60°C)

ECOCONDENS INTEGRA II PLUS 25 power: 4,3 - 26,5 kW (50/30°C) 3,9 - 30,0 kW (80/60°C)

TECHNICAL FEATURES

- condensing boiler with integrated 48 l hot water tank made of stainless steel INOX
- modulating pump (PWM signal) with automatic air vent
- modern burner provide wide range of modulation: 13%-100%
- modern heat exchanger:
 - single spacious coil of heat exchanger made of stainless steel
 - ensures constant water flow over a long lifecycle
 - reduces debris accumulation
- modulating fan
- very quiet operation
- anty-legionella function (automatic/manual)
- NOx emission class - 6
- modern control panel with systems:
 - LIN (Local Interconnect Network) with mobile applications for service (**Service Version**) and for end-user (**Comfort Version**)
 - weather regulation
 - Open Therm



MOBILE APP
COMFORT
SYSTEM



MOBILE APP
SERVICE
SYSTEM



D.H.W. SYSTEM

- tank capacity - 48 l
- tank and coil made of stainless steel INOX

WATER FLOW:

High comfort of d.h.w. at Δt 30°C:

- 12,4 l/min (ECOCONDENS INTEGRA II PLUS 20)
- 13,1 l/min (ECOCONDENS INTEGRA II PLUS 25)

TECHNICAL DATA

PARAMETERS		20 kW	24 kW
Seasonal space heating energy efficiency class		A	A
Rated heat output	P_{rated} kW	20	24
Annual energy consumption	Q_{HE} GJ	40,8	48,4
Seasonal space heating energy efficiency	η_s %	95	93
Modulation range	%	13-100	16-100
Maximum central heating water pressure	bar	3	3
Declared load profile		L	L
Water heating energy efficiency class		A	A
Water heating energy efficiency	η_{WH} %	75	75
Water flow at Δt 30°C	l/min	12,4	13,1
Water pressure in d.h.w. circuit	bar	0,1-6,0	0,1-6,0
Sound power level	L_{WA} dB	44	46
Annual fuel consumption	AFC GJ	13	13
Integrated tank capacity	l	48	48
Chimney connection	mm	Concentric $\varnothing 80/\varnothing 125$, $\varnothing 60/\varnothing 100$ or 2 single x $\varnothing 80^*$	
Dimensions (height x width x depth)	mm	937x690x410	
Net weight	kg	64	66

*by using TWIN adapter

ACCESSORIES



WIRELESS/WIRE, WEEKLY
PROGRAMMABLE
room temperature regulator
termet ST-292 V2 - wireless
termet ST-292 V3 - wire



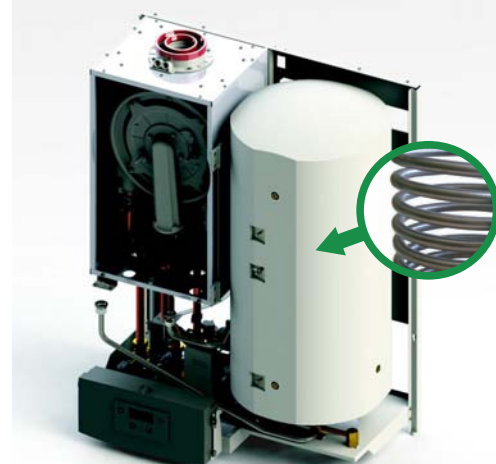
OPEN THERM
ROOM TEMPERATURE
REGULATOR type:
termet ST-2801
termet ST-2801 wi-fi



REGULATOR
COMFORT WI-FI
dedicated to the Comfort
application

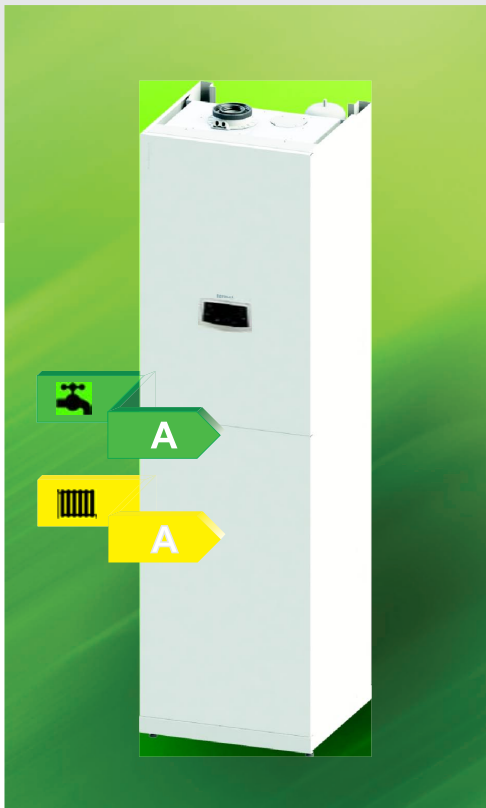


WI-FI SMART
THERMOSTAT



GAS CONDENSING BOILERS WITH INTEGRATED HOT WATER TANK

ECOCONDENS SOLID PLUS



COMBI BOILERS

ECOCONDENS SOLID PLUS 20 power: 3,0 - 22,0 kW (50/30°C)
 ECOCONDENS SOLID PLUS 25 power: 4,3 - 26,5 kW (50/30°C)
 ECOCONDENS SOLID PLUS 35 power: 4,5 - 38,2 kW (50/30°C)

C.H.

power: 3,0 - 22,0 kW (50/30°C)
 power: 4,3 - 26,5 kW (50/30°C)
 power: 4,5 - 38,2 kW (50/30°C)

D.H.W.

power: 2,7 - 25,0 kW (80/60°C)
 power: 3,9 - 30,0 kW (80/60°C)
 power: 4,1 - 30,0 kW (80/60°C)

TECHNICAL FEATURES

- condensing boiler with integrated 107 l hot water tank made of stainless steel INOX
- modulating pump (PWM signal) with automatic air vent
- modern burner provide wide range of modulation: 12%-100%
- modern heat exchanger:
 - single spacious coil of heat exchanger made of stainless steel
 - ensures constant water flow over a long lifecycle
 - reduces debris accumulation
- modulating fan
- very quiet operation
- anti-legionella function (automatic/manual)
- NOx emission class - 6
- modern control panel with systems:
 - LIN (Local Interconnect Network) with mobile applications for service (**Service Version**) and for end-user (**Comfort Version**)
 - weather regulation
 - Open Therm
 - 0-10 V



MOBILE APP
**COMFORT
SYSTEM**



MOBILE APP
**SERVICE
SYSTEM**

ACCESSORIES



**WIRELESS/WIRE, WEEKLY
PROGRAMMABLE**
room temperature regulator
termet **ST-292 V2** - wireless
termet **ST-292 V3** - wire



**OPEN THERM
ROOM TEMPERATURE
REGULATOR type:**
termet **ST-2801**
termet **ST-2801 wi-fi**



**REGULATOR
COMFORT WI-FI**
dedicated to the Comfort
application



**WI-FI SMART
THERMOSTAT**



**LEFT CONNECTION
SET**



**RIGHT CONNECTION
SET**

D.H.W. SYSTEM

- tank capacity - 107 l
- coil capacity - 5,0 m²
- coil power - 30 kW
- tank and coil made of stainless steel INOX

WATER FLOW:

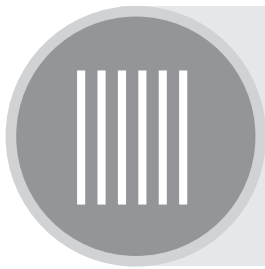
High comfort of d.h.w. at Δt 30°C:

- 12,4 l/min (ECOCONDENS SOLID PLUS 20)
- 13,1 l/min (ECOCONDENS SOLID PLUS 25)
- 13,1 l/min (ECOCONDENS SOLID PLUS 35)

TECHNICAL DATA

PARAMETERS		20 kW	24 kW	36 kW
Seasonal space heating energy efficiency class		A	A	A
Rated heat output	P_{rated} kW	20	24	36
Annual energy consumption	Q_{HE} GJ	40,8	48,4	68,9
Seasonal space heating energy efficiency	η_s %	93	93	94
Modulation range	%	13-100	16-100	12-100
Maximum central heating water pressure	bar	3	3	3
Declared load profile		L	XL	XL
Water heating energy efficiency class		A	A	A
Water heating energy efficiency	η_{WH} %	75	81	81
Water flow at Δt 30°C	l/min	12,4	13,1	13,1
Water pressure in d.h.w. circuit	bar	0,1-6,0	0,1-6,0	0,1-6,0
Sound power level	L_{WA} dB	44	46	50
Annual fuel consumption	AFC GJ	13	20	19
Integrated tank capacity	l	107	107	107
Chimney connection	mm	Concentric $\varnothing 80/\varnothing 125$, $\varnothing 60/\varnothing 100$ or 2 single $\varnothing 80$		
Dimensions (height x width x depth)	mm	1869x520x490		
Net weight	kg	108	110	112

GAS CONDENSING BOILERS



CASCADE SYSTEMS

ECOCONDENS

CRYSTAL PLUS-50

SYSTEM BOILERS

ECOCONDENS CRYSTAL PLUS-50 power: 6,1 - 49,6 kW (50/30°C)

TECHNICAL FEATURES

- modulating pump (PWM signal) with automatic air vent
- modern heat exchanger made of stainless steel
- modulating fan
- new generation **BLUEJET®** burner:
 - wide range of modulation: 11%-100%
 - improved flame detection
 - reduced pollutant emissions
- weather regulation available
- **OPEN-THERM** system available
- cylinder burner made of stainless steel with **low level of NOx emissions (NOx - 6 class)**
- modern control panel with electronic display
- hydraulic group (hydroblock) assembled on quick-connectors
- full self-diagnostics
- COMBI VERSION available (water flow 22 l/min)
- cascade system: from 2 to 4 boilers with cascade manager AX 1203SQ and **OPEN-THERM** regulator CR 11011



ZONE MANAGER I-3 PLUS WITH OPEN-THERM COMMUNICATION

- smooth control of three mixing valves
 - control of the D.H.W. pump
 - operation of the solar system
 - pump control with PWM signal
 - return temperature protection
 - weather and weekly control
 - two 0-10V outputs
 - open-therm communication
- two voltage-free outputs configurable
- two voltage outputs configurable
- cooperation with three binary room controllers
- cooperation with the room controller with RS communication
- possibility of connecting WIFI RS internet module - management via eModul
- possibility of software update via USB port

TECHNICAL DATA

PARAMETERS		50 kW
Seasonal space heating energy efficiency class		A
Rated heat output	P_{rated} kW	45
Annual energy consumption	Q_{HE} GJ	93,1
Seasonal space heating energy efficiency	η_s %	91
Sound power level	L_{WA} dB	69
Nominal heat load	kW	5,7-46,2
Efficiency of the boiler at partial load and return water temperature 30°C	%	107,7
Max temperature (central heating)	°C	95
Standard adjustable temperature	°C	20-80
Reduced adjustable temperature	°C	20-55
Pump head	kPa (bar)	70 (0,7)
NOx emission	class	6
Max. amount of condensate (natural gas)	l/h	4,7
Max. water pressure	bar	3
Expansion vessel capacity	l	8
Air pressure in expansion vessel	bar	0,8 _{0,2}
Supply voltage	V	~230±10%/50Hz
Protection class	-	IPX4D
Power consumption	W	250
Heating water flow/return	inch	G3/4
Chimney connection	mm	Concentric Ø60/Ø100/Ø80/Ø125 or 2 single Ø80 x Ø80
Dimensions (height x width x depth)	mm	730x400x440
Net weight	kg	37

I-3 PLUS INSTALLATION CONTROLLER



- large 4.3" colour touch screen LCD display
- DHW sensor
- external sensor
- valves temperature sensors
- return and boiler temperature sensors

ACCESSORIES

CASCADE MANAGER AX 1203SQ



- cascade control from 2 to 4 boilers
- Consist of:
 - Cascade manager type AX 1203SQ
 - Open-therm regulator type CR 11011
- equipped with outdoor temperature sensor and supply temperature sensor

OUTDOOR TEMPERATURE SENSOR

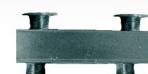


FUME SYSTEM



Flue gas exhaust from 2 to 5 boilers working in cascade (quantity of elements - according to the project)

HYDRAULIC COUPLING



CASCADE SYSTEMS

EcoCONDENS

CRYSTAL-80
CRYSTAL-100



SYSTEM BOILERS

EcoCONDENS CRYSTAL-80 power: 17,0-80,0 kW (80/60°C)
EcoCONDENS CRYSTAL-100 power: 17,0-100,0 kW (80/60°C)

TECHNICAL FEATURES

- modern DUO heat exchanger made of stainless steel:
 - low pollutant emissions (NOx - 6 class)
- electronically controlled burner
- primary modulating pump PWM H-8 m. built-in
- control of heating zones by zone manager
- **OPEN-THERM** system available
- system weather regulation in option
- control board with cascade manager function (max 6 boilers)
- control up to 3 zones via zone manager I-3 plus



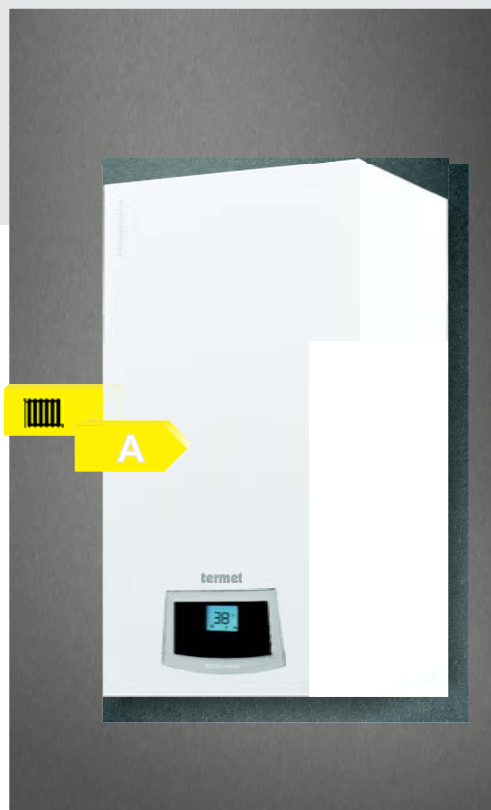
DUO HEAT EXCHANGER

ZONE MANAGER I-3 PLUS WITH OPEN-THERM COMMUNICATION

- smooth control of three mixing valves
- control of the D.H.W. pump
- operation of the solar system
- pump control with PWM signal
- return temperature protection
- weather and weekly control
- two 0-10V outputs
- open-therm communication
- two voltage-free outputs configurable
- two voltage outputs configurable
- cooperation with three binary room controllers
- cooperation with the room controller with RS communication
- possibility of connecting WIFI RS internet module - management via eModul
- possibility of software update via USB port

TECHNICAL DATA

PARAMETERS		80	100
Sound power level	L_{WA} dB	62	65
Nominal heat load	kW	18,0-82,0	18,0-103,0
Efficiency of the boiler at partial load and return water temperature 30°C	%	107	
Efficiency of the boiler at partial load and return water temperature 70°C	%	97	
Max temperature (central heating)	°C	80	
Standard adjustable temperature	°C	80	
Reduced adjustable temperature	°C	20	
Range of modulation	%	21-100	17-100
Pump head	kPa (bar)	80 (0,8)	
NOx emission	klasa	6	
Max. amount of condensate (natural gas)	l/h	12	15
Max. water pressure	bar	4	
Supply voltage	V	~230±10%/50Hz	
Protection class	-	IPX4D	
Power consumption	W	350	
Heating water flow/return	cale	G5/4"-G1"	
Chimney connection	mm	2 single 2 x Ø100	
Dimensions (height x width x depth)	mm	810x540x545	
Net weight	kg	84	



I-3 PLUS INSTALLATION CONTROLLER



- large 4.3" colour touch screen LCD display
- DHW sensor
- external sensor
- valves temperature sensors
- return and boiler temperature sensors

ACCESSORIES



OPEN-THERM
CR 11011



OUTDOOR
TEMPERATURE
SENSOR



THREE-WAY VALVE
G1" (230 V)



NTC SENSOR (12kΩ)



AIR-FLUE GAS SYSTEM